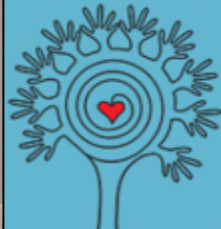




*One Source - Empowering Caregivers*

# Case Statement 2019





# The OSEC Purpose

## **Vision:**

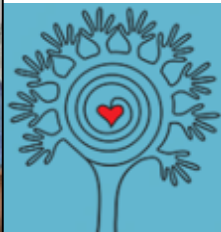
To build a model program that will be recognized as the nation's leader in providing highly trained volunteers for caregivers and their care recipients, with free, quality, non-medical, in-home respite care, and community resource referrals.

## **Mission:**

To Improve Quality of Life for caregivers and care recipients by providing free, high quality, non-medical, in-home respite care and community resource referrals.

## **Values:**

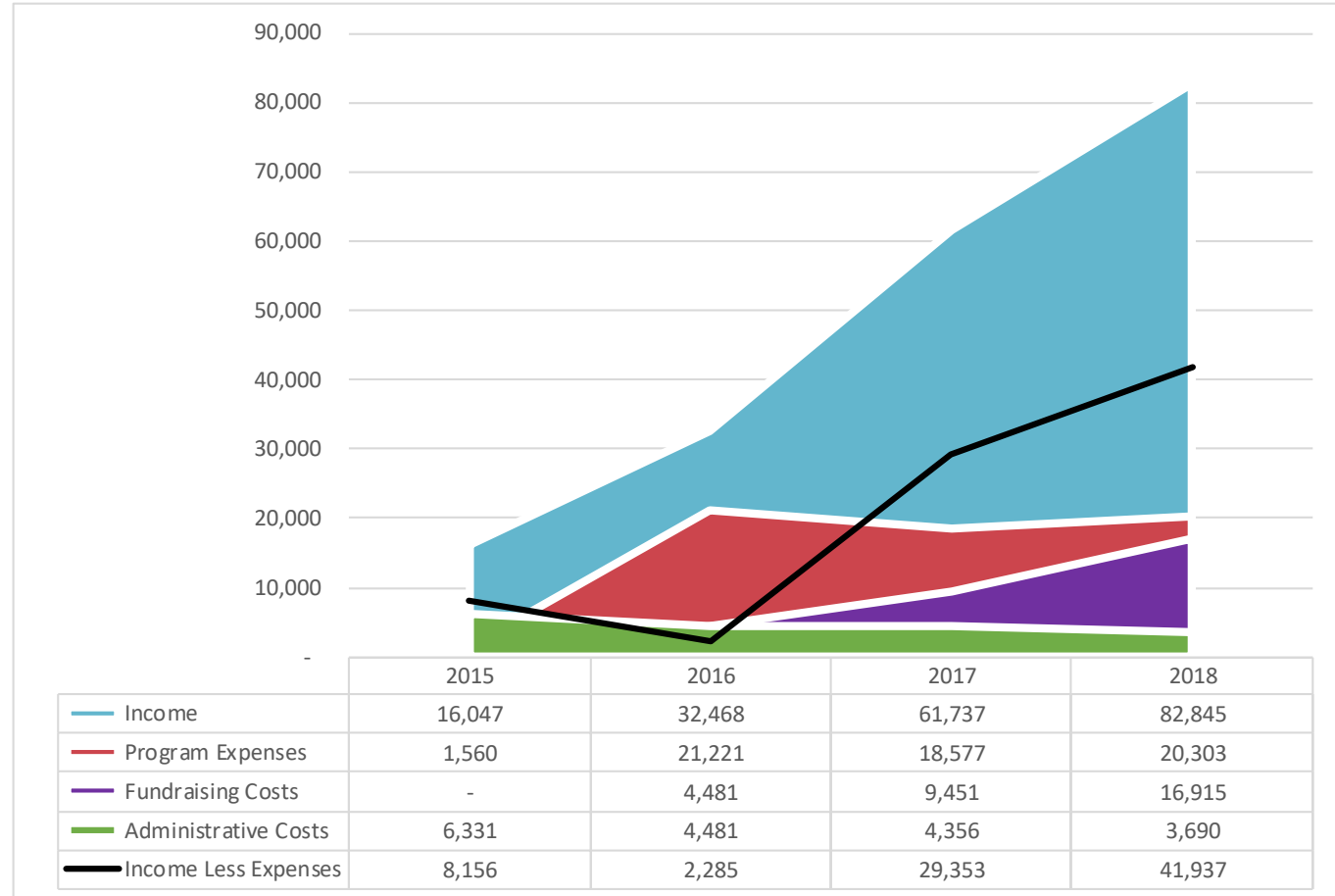
Professional, reliable, quality service by training competent and caring volunteers who will be responsive to the non-medical needs of caregivers and their families.





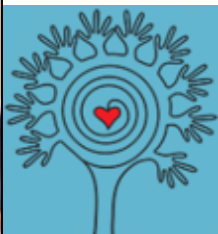
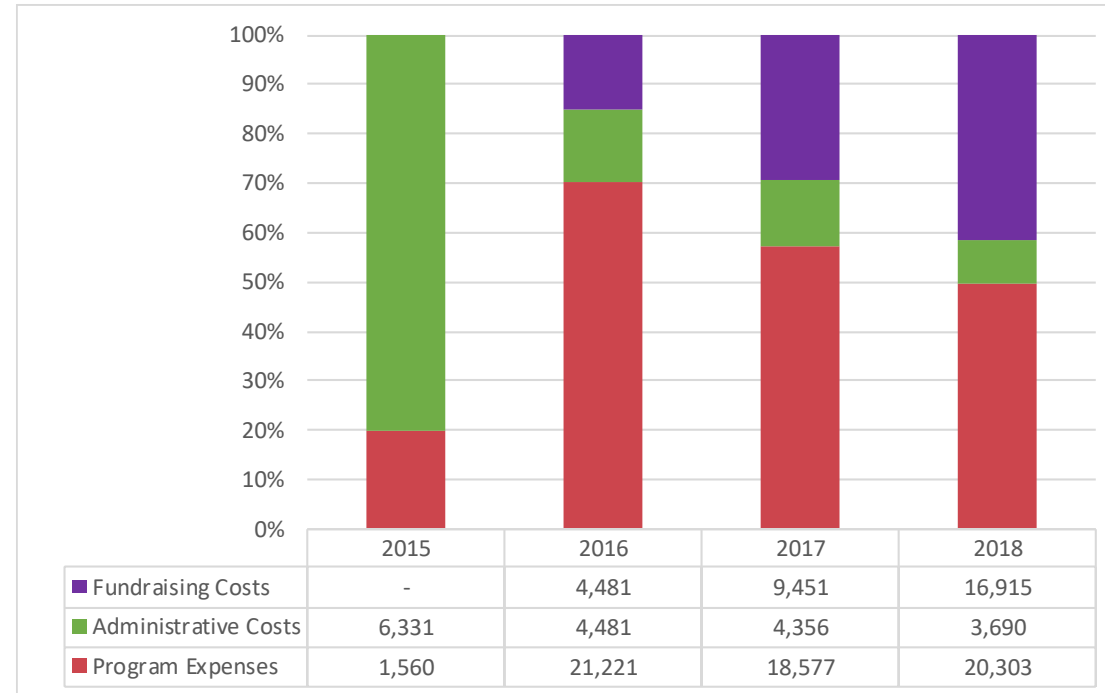


## Past Financial Performance

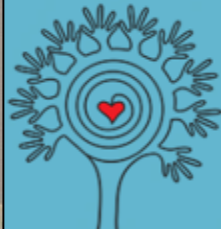




# The Cost of Our Program







## Who We Help

- **The Informal Caregiver**

Unpaid assistant to an adult with functional limitations

- **46 Million Americans**

Aged 65 or older representing 14% of the total U.S. population<sup>{1}</sup>

- **36 Million Americans**

Estimated to be “Informal Caregivers”<sup>{1}</sup>

- **24,000 Nevada County residents**

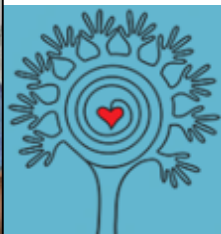
Aged 65 or older representing 24.5% of the population<sup>{2}</sup>

- **These statistics suggest that there are 18,000+ Informal Caregivers in Nevada County Alone that we want to serve** ❤️

- The proportion of older Americans is expected to increase to 21% by 2030<sup>{1}</sup>

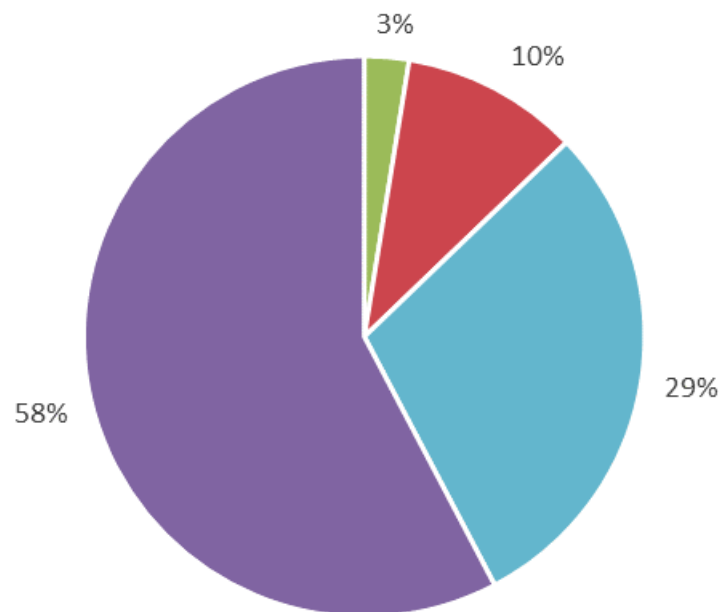
<sup>{1}</sup>According to Older Americans 2016 Report prepared by the Federal Interagency Forum on Aging Related Statistics

<sup>{2}</sup>According to the 2015 Census Estimates



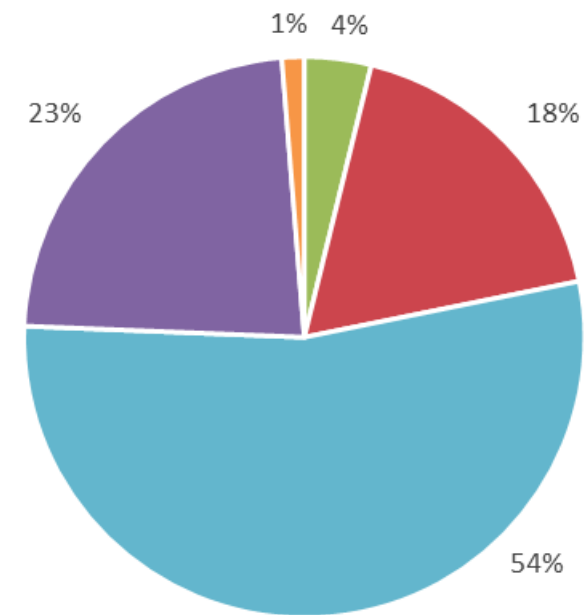


# Who We Help



What is the age of the caregiver (years)?

■ 35-45 ■ 45-55 ■ 55-65 ■ 65+



What is the age of the person they are caring for (years)?

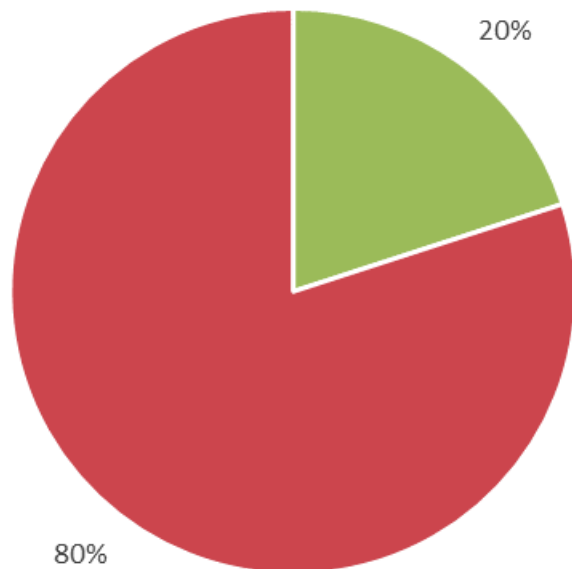
■ 18+ ■ 50+ ■ 75+ ■ 90+ ■ 100+

Results of survey data internally collected and compiled



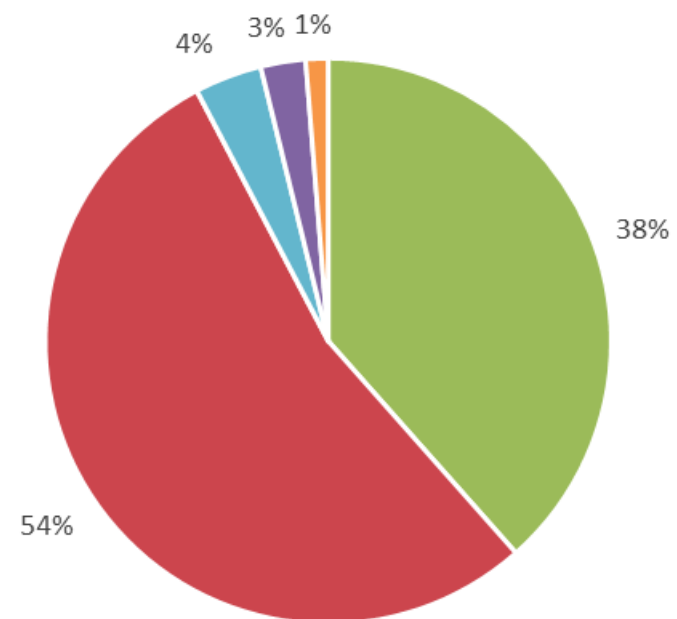


# Who We Help



Is the caregiver male or female?

■ Male ■ Female



What is the care recipient's relationship to the care recipient?

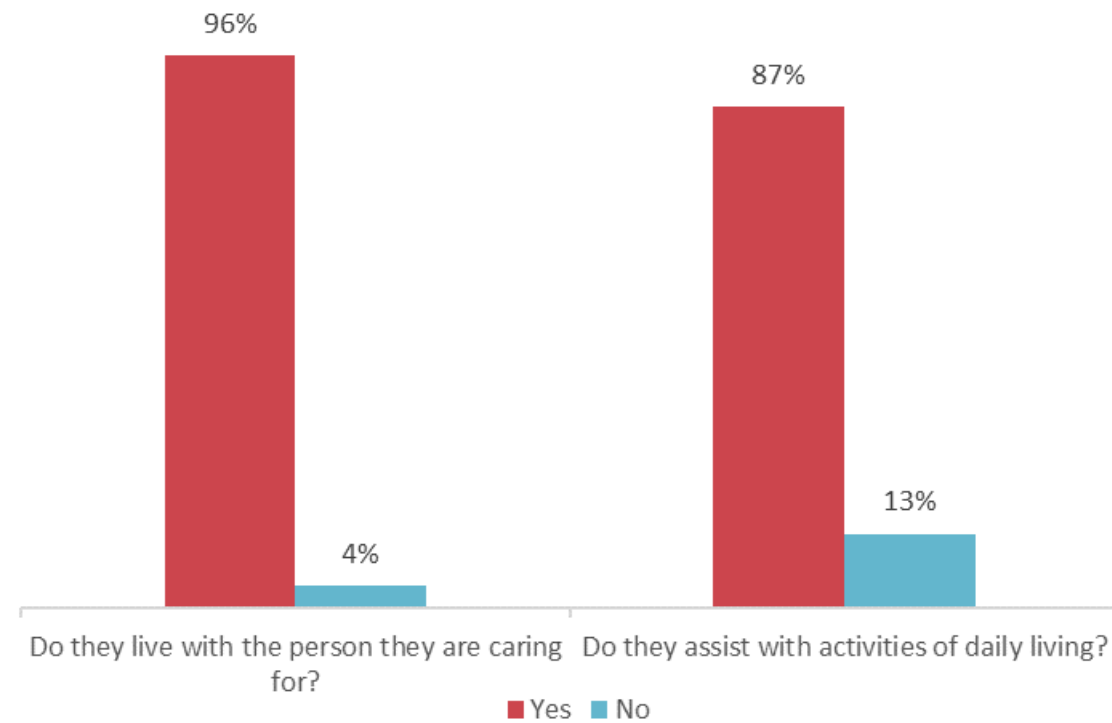
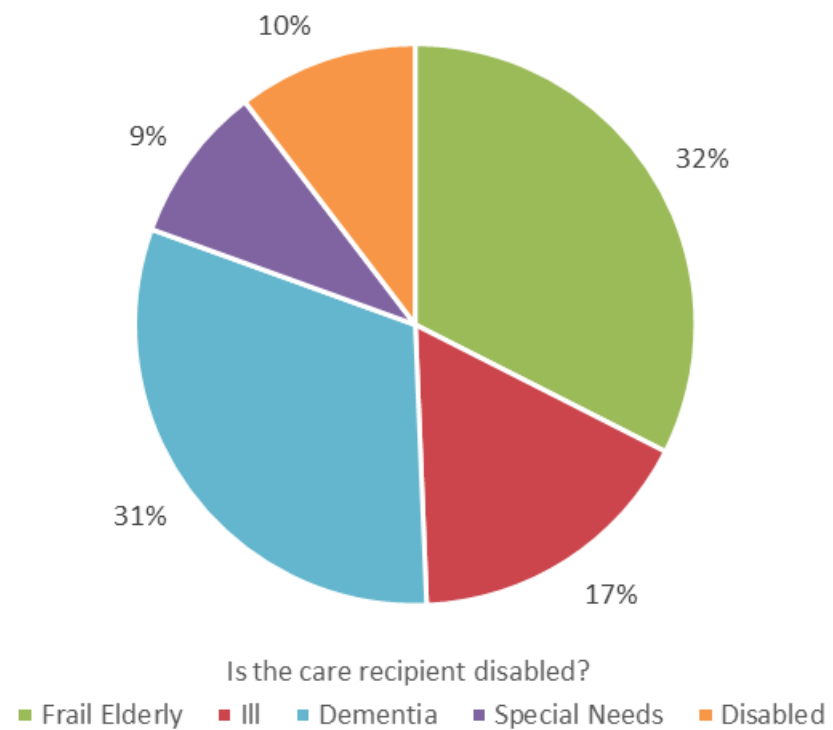
■ Parent ■ Spouse ■ Child ■ Grandparent ■ Friend

Results of survey data internally collected and compiled





# Who We Help



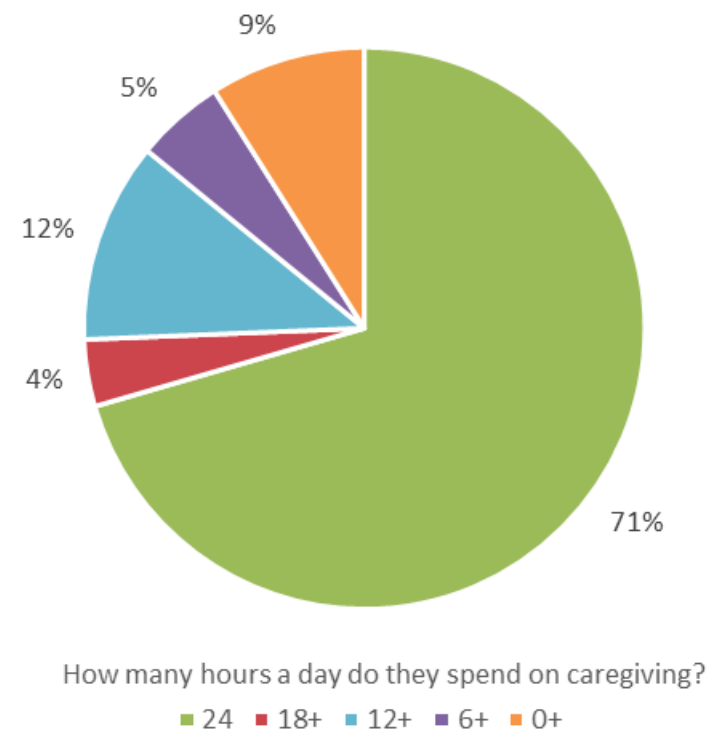
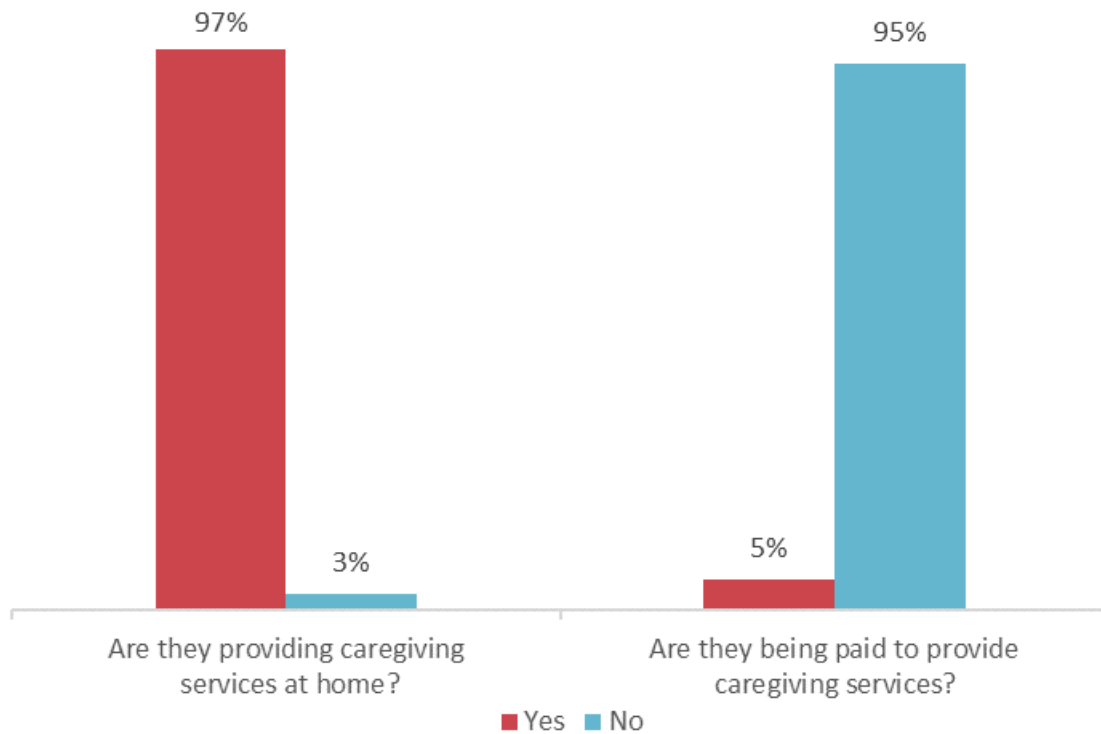
Results of survey data internally collected and compiled







# Who We Help

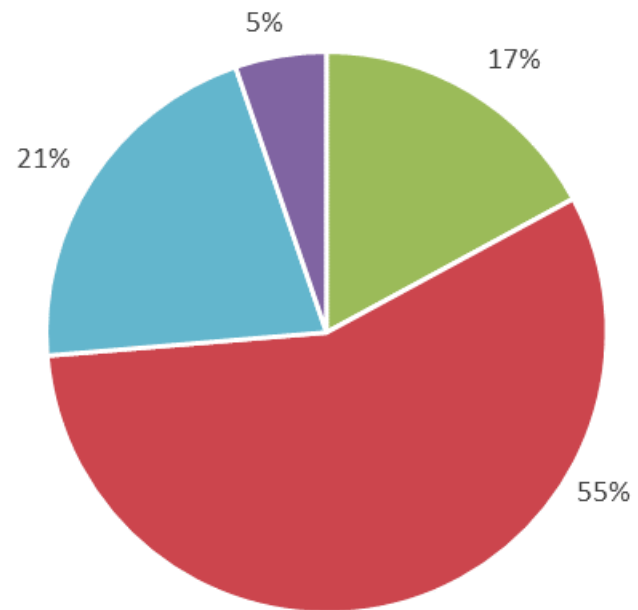


Results of survey data internally collected and compiled



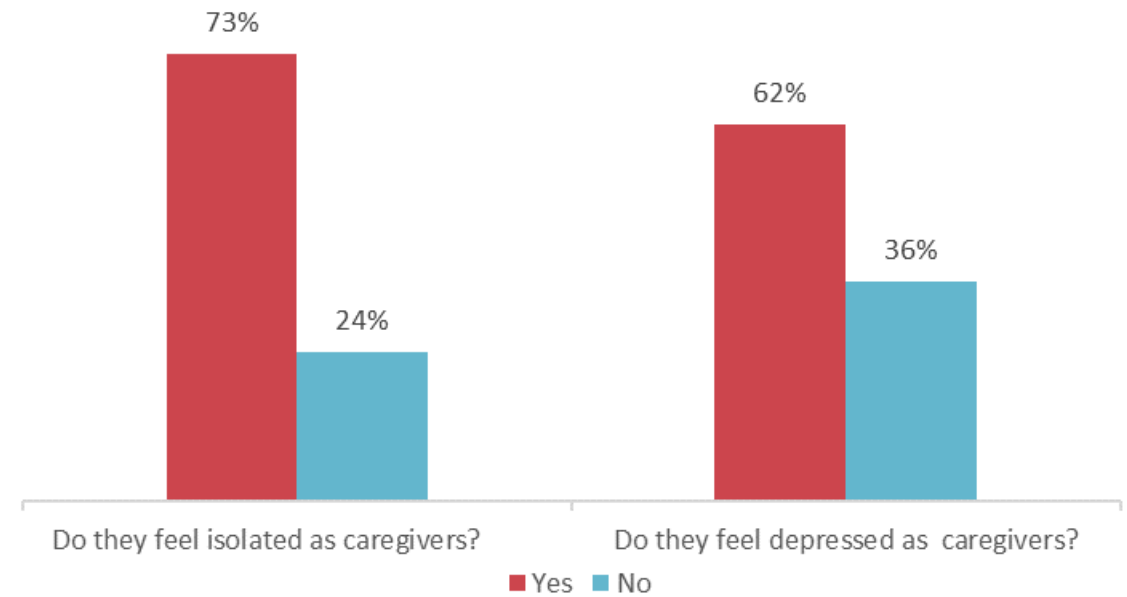


# Who We Help



How do they, as caregivers, view their own health?

■ Excellent ■ Good ■ Fair ■ Poor

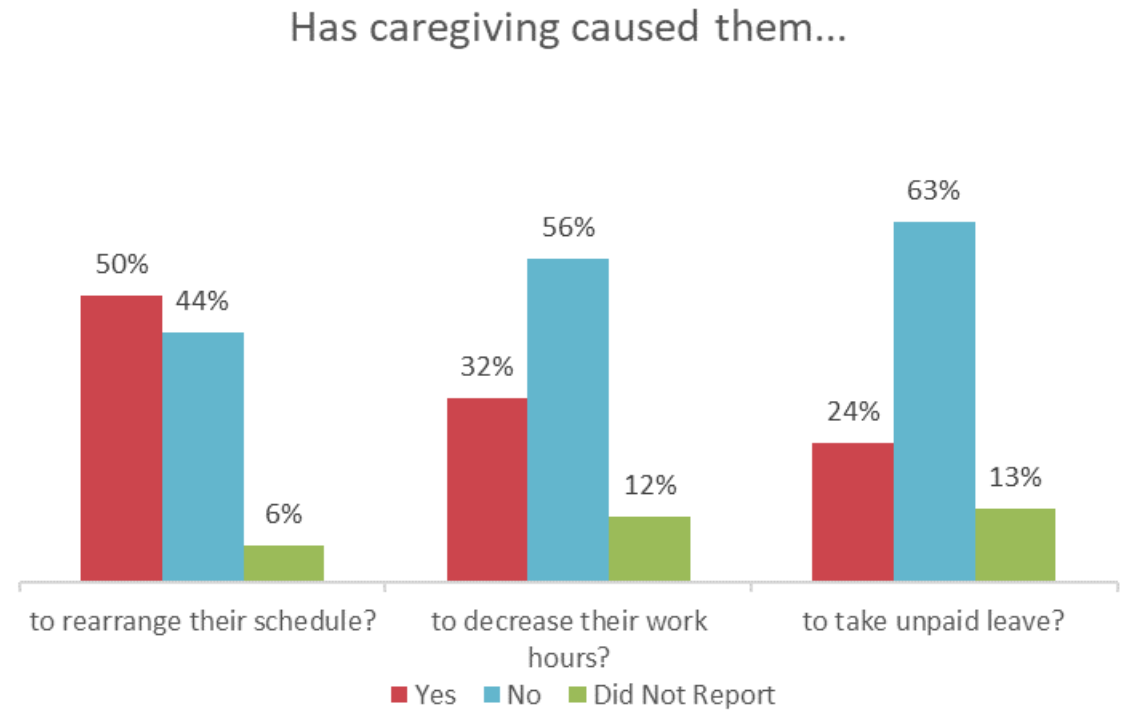
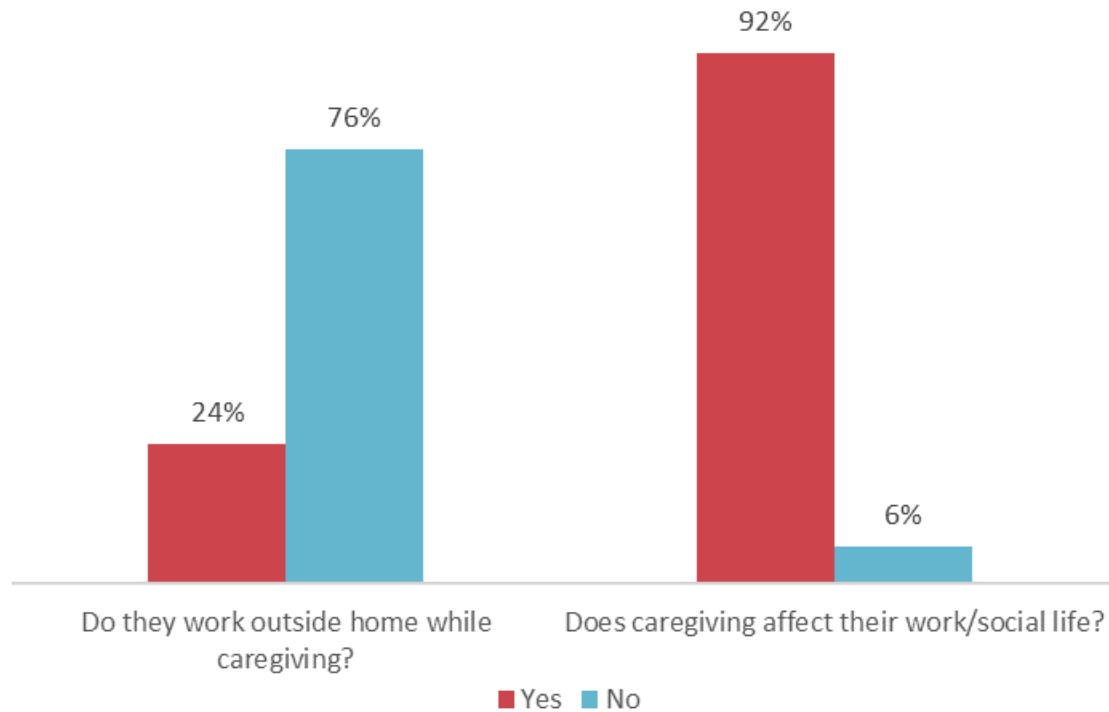


Results of survey data internally collected and compiled





# Who We Help



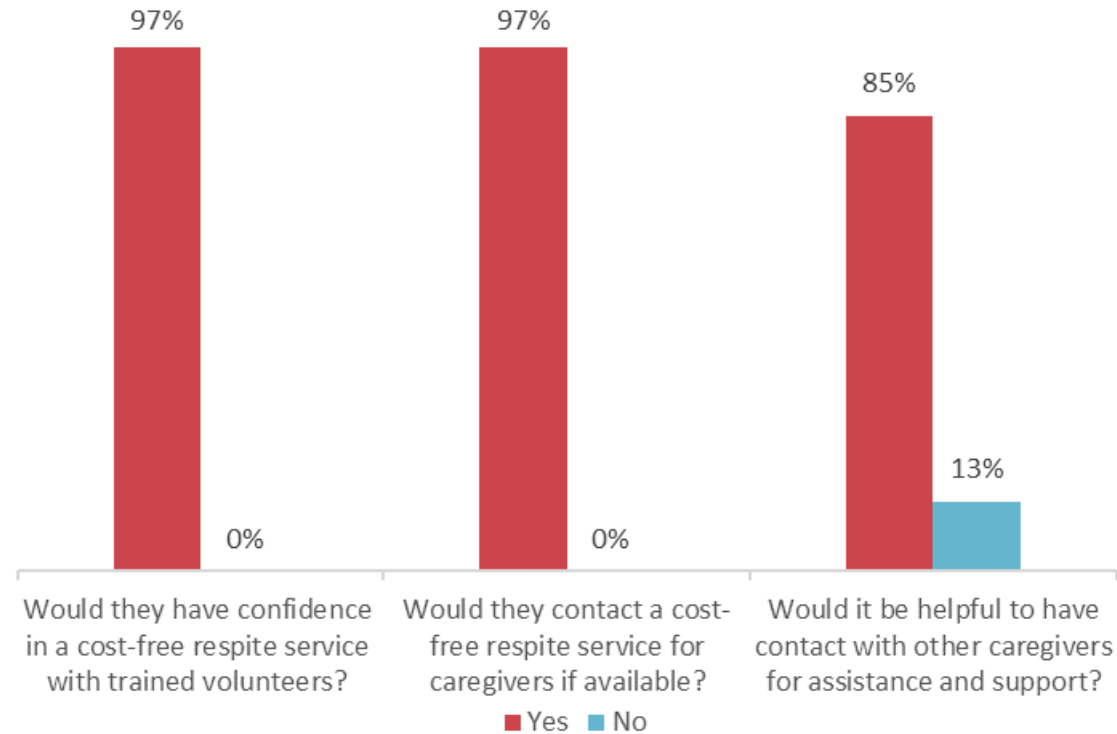
Results of survey data internally collected and compiled







# Who We Help



Results of survey data internally collected and compiled





# OSEC History and Accomplishments

- Formed in 2014 – Board of Directors installed and 501(c)(3) tax-exempt status obtained in 2015,
- Internally developed a program model, manual, and training program for volunteers with the help of experienced community members in 2015 and 2016,
- Successfully trained and built a team of 28 volunteers and served 87 households in the community,
- OSEC is enthusiastic about helping members of the community in 2019, and
- Looking forward to expanding service base, education, and community partnership.





# The OSEC Community

## Board of Directors and Staff

**President and Founder,** Donna Raibley

**Vice President,** Deborah Rousseau

**Secretary,** Sandy Spurgeon

**Treasurer,** Daniel Whelan

**Legal Director Advisor,** Stephen Baker, Esq

**Medical Director Advisor,** Mark Agness, MD

**Assessment Committee,** Cindy Cooper, RN

**Assessment Committee,** Diane Miessler, RN

**Executive Director,** Carolyn Seyler, RN, MS

**Volunteer Coordinator,** Harriet Totten







## Why OSEC

- We do not use a fee for service model as a means for support so we are fully supported by donations, grants and other funding sources
- This service is critical to our community because Nevada county's senior population (those 65 and older) is 24.5%, almost double the California average of 13.3% and the national average of 15%
- 12% of the US population is acting as an Informal Caregiver
- There is no other program available in Nevada County providing FREE respite care for Local Unpaid Informal Caregivers

